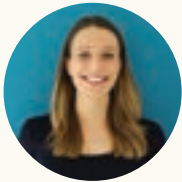


# LABCENTRAL CORE FACILITIES RELATIONSHIPS

While LabCentral offers a ton of equipment, we know that our residents may still have unmet technical needs. We are establishing relationships with local core facilities to supplement the capabilities within LabCentral.



If you are interested in learning more, please contact  
**Lyndsey Rissin**, *Director of Science Strategy*  
[lrissin@labcentral.org](mailto:lrissin@labcentral.org)

## LabCentral will set you up for success by:

- **Filling you in on the process** so you know what to expect before engaging with a new team.
- **Providing direct introductions** to the proper contacts for your needs.
- **Processing transactions through Stork\***  
These include issuing purchase orders, receiving invoices, and paying on your behalf so you don't have to manage separate accounts. Services to be consolidated with your monthly LabCentral invoice.  
*\*subject to standard Stork service charge*
- **Connecting you to other residents** who have previously worked with the Core Facility to share experiences (*based on mutual agreement*).

## Not sure which equipment is the best fit for your research?

Consider leveraging the expertise of LabCentral's sponsors to identify the best approach for your work.

*Example: We don't have electron microscopy (EM) onsite, but you can talk to our Sponsor, Zeiss, about which EM platform and Core Facility would be a good fit for your application.*



**SCROLL FOR LIST OF FACILITIES**

CORE	LOCATION	TECHNICAL OFFERINGS	SPECIAL PRICING
<a href="#">Ragon Institute Cores</a>	600 Main St. Cambridge, MA 02142	<ul style="list-style-type: none"> <li>• <a href="#">Flow Cytometry - Analyzers &amp; Cell Sorting</a></li> <li>• <a href="#">Imaging</a></li> </ul>	Yes, pre-Series A companies are eligible for the "External Non-Profit" rate
Broad Core Facilities	75 Ames St. Cambridge, MA 02142	<ul style="list-style-type: none"> <li>• Flow Cytometry - Analyzers &amp; Cell Sorting</li> <li>• Genomics</li> <li>• Histology</li> </ul>	Yes
<a href="#">MIT BIF Biophysical Instrumentation Facility</a>	31 Ames St. Building 68, Koch Biology Building	<ul style="list-style-type: none"> <li>• Biolayer Interferometry (BLI)</li> <li>• Dynamic Light Scattering (DLS)</li> <li>• Isothermal Titration Calorimeter (ITC)</li> <li>• Circular Dichroism (CD)</li> <li>• nanoDSF</li> <li>• Mass Photometry (MP)</li> <li>• SEC-MALS</li> </ul>	Not at this time
<a href="#">Whitehead Institute Core Facilities</a>	465 Main St. Cambridge, MA 02142	<ul style="list-style-type: none"> <li>• <a href="#">Flow Cytometry - Analyzers &amp; Cell Sorting</a></li> <li>• <a href="#">Genomics</a></li> <li>• <a href="#">Imaging</a></li> <li>• <a href="#">Metabolomics</a></li> <li>• <a href="#">Proteomics</a></li> <li>• <a href="#">Functional Genomics (Screening)</a></li> <li>• <a href="#">Bioinformatics &amp; Research Computing</a></li> </ul>	No, their pricing is offered at cost
<a href="#">MIT.nano</a>	60 Vassar St. Building 12 Cambridge, MA 02139	<ul style="list-style-type: none"> <li>• <a href="#">Fabrication &amp; characterization of micro, nano, and sub-nanoscale structures</a></li> <li>• Electron Microscopy (incl. Cryo-EM)</li> </ul>	Yes, if accepted to the Start.nano program
<a href="#">The Engine</a>	750 Main St. Cambridge, MA 02142	<ul style="list-style-type: none"> <li>• Fabrication and machining</li> <li>• 3D Printing</li> </ul>	Access to equipment and services via hourly rates <i>(membership not required)</i>
<a href="#">CNS Harvard Center for Nanoscale Systems</a>	Cambridge - LISA Building @ 10 Oxford St.  Allston - SEC Building @ 114 Western Ave.	<ul style="list-style-type: none"> <li>• Materials characterization</li> <li>• Fabrication &amp; characterization of nanoscale devices &amp; structures</li> <li>• Imaging and analysis (incl. EM)</li> </ul>	< 10M in funding or Life Lab residents qualify for Non-Harvard Academic Rates  > 10M qualify for better rate than Standard Non-Academic Rates
<a href="#">DCIF MIT Dept. of Chemistry and Instrumentation Facility</a>	21 Ames St. Bldg 18 Camille Edouard Dreyfus Building	<ul style="list-style-type: none"> <li>• Mass spectrometry</li> <li>• NMR spectroscopy</li> <li>• X-band EPR spectroscopy</li> </ul>	Not at this time