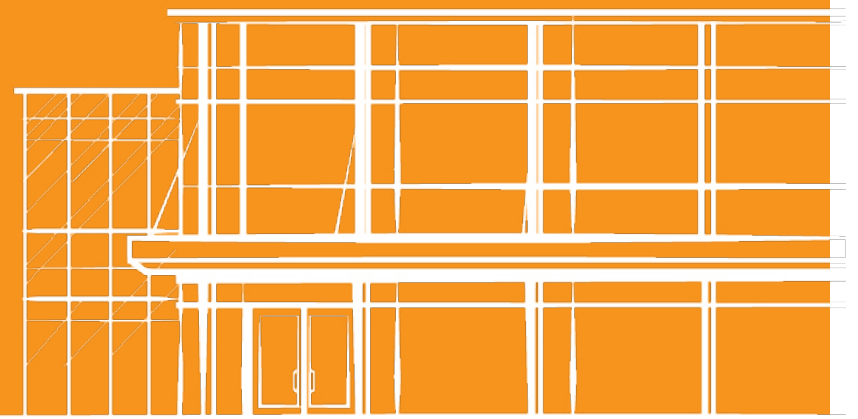


Lab | Central  
IMPACT REPORT 2015

---



# Lab | Central



Dear Friends,

We are excited to share with you our new "LabCentral Impact Report 2015." Our first full year of operations exceeded our wildest expectations. We're proud that LabCentral continues to attract the area's best entrepreneurs and scientists in life sciences, and that it has quickly become an epicenter of early-stage life-sciences activity in Massachusetts. Please take a few minutes to review the data points and statistics highlighted in this report, and join me in thanking our sponsors and supporters as well as our terrific LabCentral team for this success.

In 2016 and 2017, LabCentral will be announcing very exciting growth plans, which will allow us to serve many more startups. Unfortunately, we have had to turn down many worthy companies because of space limitations. LabCentral plans to more than double our footprint in 2017.

If you have not visited recently, I invite you to sign up for one of our public tours, or to join one of our many social, community, and networking events focused on the latest topics in science and business – or come meet the local artists whose works are featured in one of our rotating art exhibitions.

We look forward to meeting you.

Thank you,



Johannes Fruehauf, M.D., Ph.D  
President and Executive Director

36  
COMPANIES

9  
ALUMNI



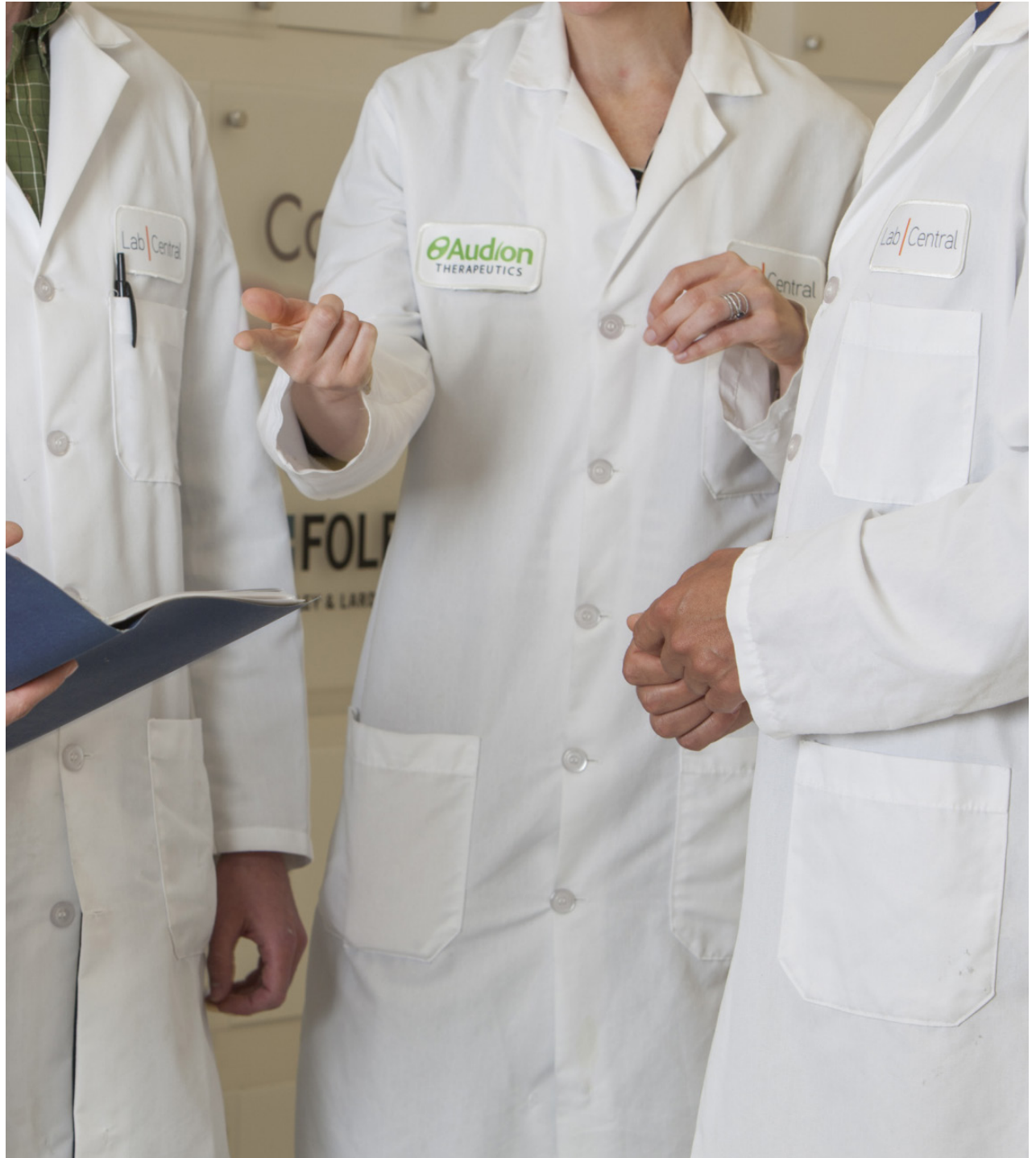


# \$460 M

RAISED IN 2015 BY RESIDENTS  
AND ALUMNI TO SUPPORT  
THEIR RESEARCH\*

LabCentral companies have been highly successful in raising additional financing, adding jobs to the economy, and building partnerships. In 2014, LabCentral residents raised \$207 million; in 2015 LabCentral resident and alumni companies raised \$460 million more.

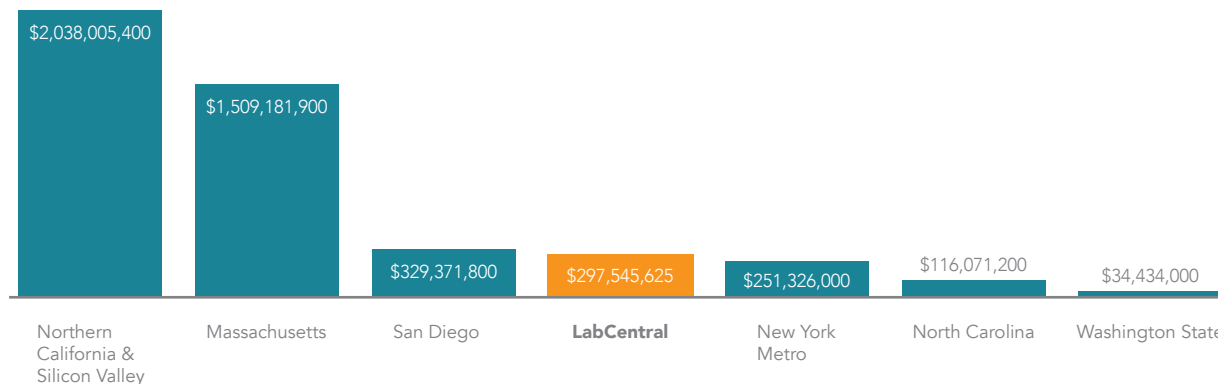
Consistent with our mission, LabCentral selected these companies for their high potential and high impact on improving human health. As per our requirements, no company had raised more than \$7.5 million before moving in.



\*All financial, employment and investment data included in this report is self-reported by 33/33 current LabCentral resident companies and 8/9 alumni companies. This total does not include a \$223 M IPO.

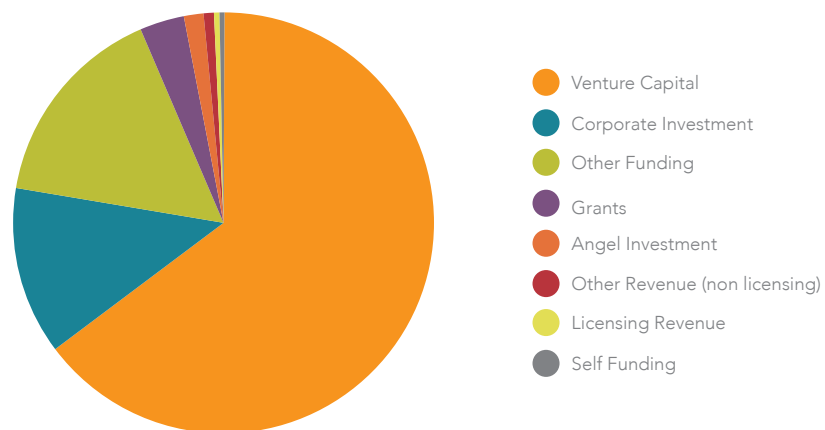
# 2015 VC INVESTMENT IN EARLY & SEED STAGE LIFE SCIENCES & BIOTECHNOLOGY\*

LabCentral Alumni & Resident Companies



# SOURCES OF FUNDING CLOSED IN 2015~

LabCentral Alumni & Resident Companies



91 

NEW  
PATENTS FILED

20 

PATENTS  
GRANTED

25 

NEW LICENSING  
AGREEMENTS

36 

NEW  
PARTNERSHIPS  
FORMED

\*All comparative VC data taken from PWC Money Tree and Swiss Private Equity & Corporate Finance Association. ~Not including a 2015 \$223 M IPO.



# 183

NEW JOBS

LabCentral companies are successfully adding professional opportunities to the workforce. Combining the new jobs created in 2014 and 2015, LabCentral resident and alumni companies have so far created a total of 288 jobs. Based on the Bureau of Labor's Occupational Employment Statistics, jobs added in 2015 add roughly \$14 million in annual wages to the economy.

LabCentral's model very intentionally focuses on creating operational efficiencies that allow companies to focus on research and business development in this early stage. This is borne out in the hiring patterns of our residents companies, which typically wait to hire operations staff until they are preparing to graduate.

# NEW JOBS CREATED

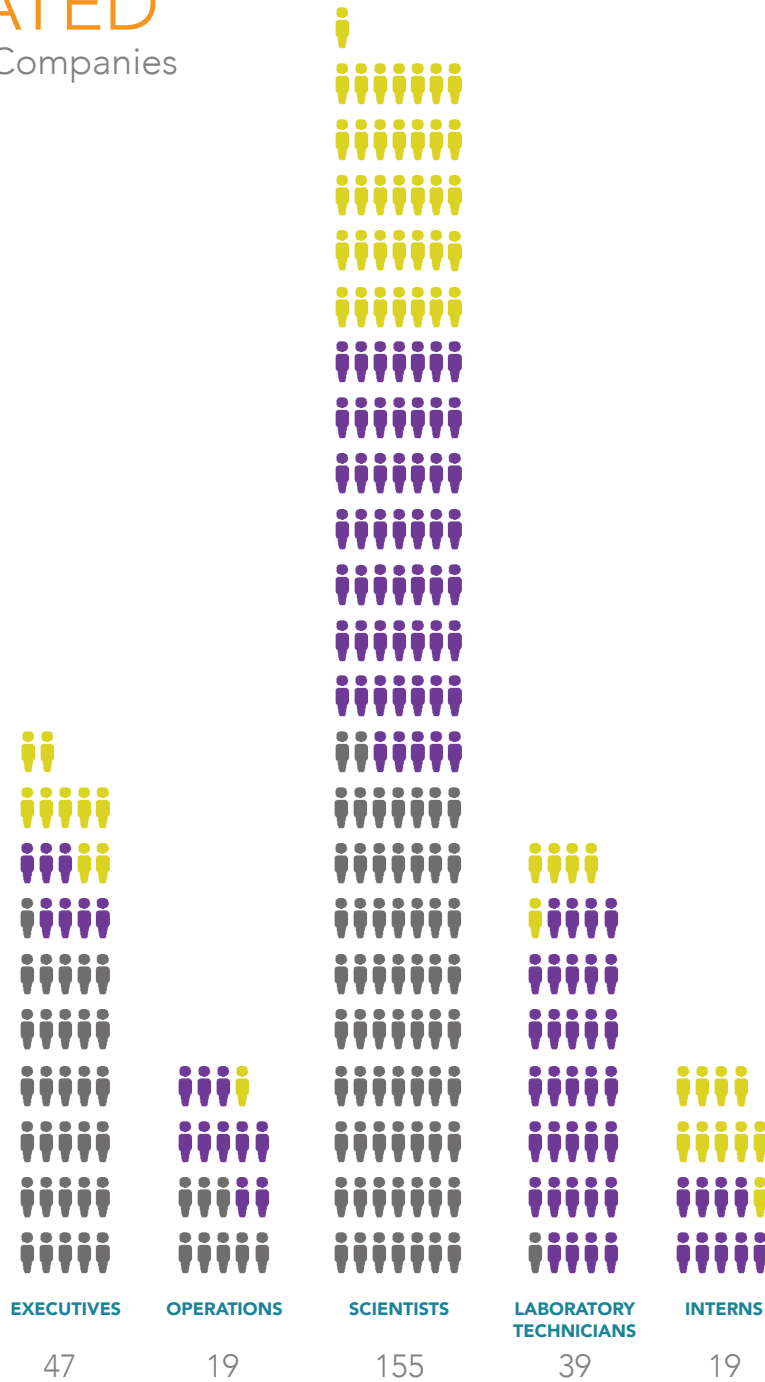
by LabCentral Alumni & Resident Companies

**TOTAL JOBS**  
created by LabCentral  
alumni & resident companies: **288**

**CURRENT RESIDENT**  91  
company new jobs  
created in 2015

**ALUMNI**  92  
company new jobs  
created in 2015

**RESIDENT & ALUMNI  
WORKFORCE**  105  
as of the end of 2014



Combined total by category:



# 62%

of current residents hold PhDs, with 178 years of combined post-doc experience. (68% hold a terminal degree in their field.)



# 63%

of residents have a relationship with a Massachusetts academic institution



9

## SUCCESSFUL ALUMNI COMPANIES GRADUATED

In 2015, LabCentral saw its first nine companies graduate successfully into spaces of their own.

All but one alumni company has remained in Cambridge, with most fewer than four miles from LabCentral. They have all elected to stay within a close radius of the local innovation hub in Kendall Square and Technology Square. Many have elected to maintain LabCentral architectural and environmental features for organizational culture and increased productivity.





90,870

square feet of real estate occupied by alumni companies in Massachusetts



14.5

average months spent at LabCentral by 2015 alumni companies

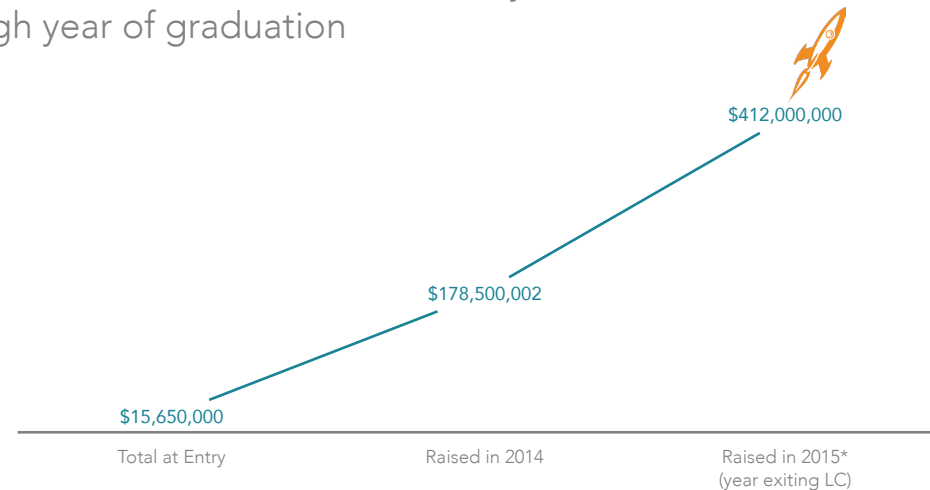


21,745

number of cups of coffee fueling residents to grow quickly (1,810,800 mg of caffeine)

# ALUMNI LAUNCH TRAJECTORY

by 2015 LabCentral Alumni from entry through year of graduation



## 2015 ALUMNI

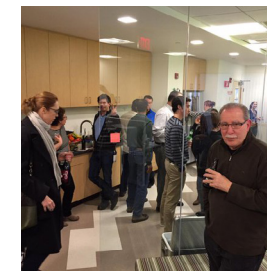
Compass Therapeutics  
 NantKwest  
 Navitor Pharmaceuticals  
 Potenza Therapeutics  
 Rubius Therapeutics  
 Surface Oncology  
 Unum Therapeutics  
 XTuit Pharmaceuticals  
 Yumanity

## NEW HOME

Cambridge, MA – Kendall Sq  
 Cambridge, MA – Kendall Sq  
 Cambridge, MA – Central Sq  
 Cambridge, MA – Central Sq  
 Cambridge, MA – Cambridgeport  
 Cambridge, MA – Kendall Sq  
 Cambridge, MA – Alewife  
 Waltham, MA  
 Cambridge, MA – Cambridgeport

## DISTANCE FROM LABCENTRAL

0.90 miles  
 0.25 miles  
 1.10 miles  
 1.10 miles  
 1.10 miles  
 1.10 miles  
 4.90 miles  
 10.60 miles  
 0.50 miles



\*Does not include a 2015 \$223 M IPO.



# 4,000

ATTENDEES AT  
LABCENTRAL PROGRAMMING

LabCentral hosted a total of 121 programs in 2015. Some of these were for residents and sponsors only, but many were open to the greater community. Attendance was split roughly 50/50 between internal residents and outside guests.

LabCentral continues to serve as the new model for building early-stage biotech companies. This year, LabCentral saw 27 international tour groups as well as numerous other significant guests.



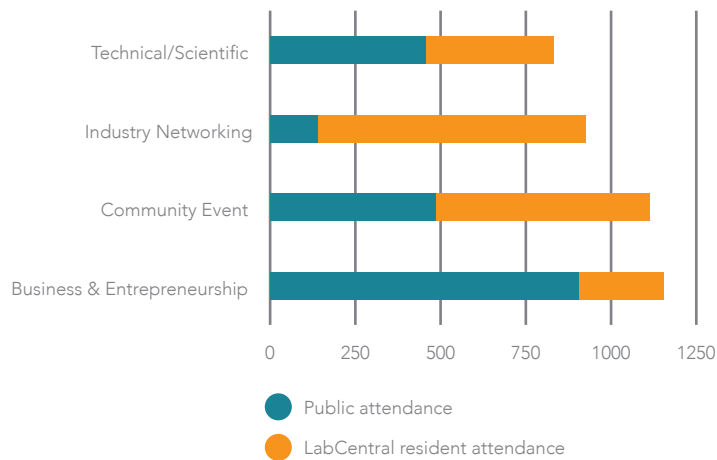
## VIP GUESTS IN 2015 INCLUDED

U.S. Secretary of Defense, Ashton Carter	Chancellor of University of North Carolina
Swiss Head of Innovation Policy & legislative delegation.	Delegation of officials from Kyoto
All China Youth Federation delegation	High-ranking city officials from the mayor's office of both London and Dusseldorf.
The Mayor of Xuhui (a district of Shanghai)	Leaders from Foundation for Polish Science
The Mayor of Reykjavik, Iceland	Leaders from University of Guadalajara

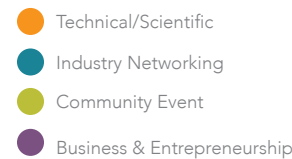
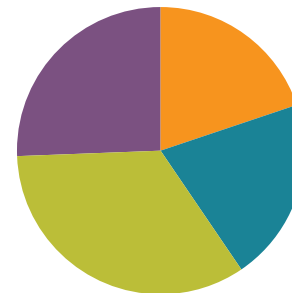


## PROGRAMMING ATTENDANCE IN 2015

by LabCentral residents & public



## 2015 PROGRAM OFFERINGS



121

trainings & events offered; 4000+ in attendance



9,023

orders placed through LabCentral's centralized purchasing service (>\$2.8 M in lab supplies)



139,884

number of pipette tips used in LabCentral shared BL2 rooms

# 2015 SPONSORS

## FOUNDING



## PLATINUM



## GOLD



## SPONSORS

